



Early Years Educator Level 3

Overview



Early Years Educator Level 3

Overview

The Early Years Educator Level 3 apprenticeship provides a great training opportunity for team members working in a range of private and public settings. Such as; full day care, children's centres, pre-schools, reception classes, playgroups, nursery schools, home based provision and local authority provision who deliver the Early Years Foundation Stage (EYFS) requirements set by government for the learning, development and care of children from birth to five in both indoor and outdoor environments.

Key responsibilities may include:

- Planning and supervising child-initiated and adult-led activities, based around the needs and interests of each individual child
- Meeting the care needs of individual children such as, feeding, changing nappies and administration of medicine
- Ensuring each child feels safe and secure
- Supporting children to develop numeracy and language skills through games and play
- Observing children and adapting and shaping their learning experiences
- Working in partnership with other colleagues, parents and/or carers or other professionals to meet the individual needs of each child

Benefits



Enhanced ability to provide extremely high standard of childcare to every child every day processes and associated theories



Work effectively with colleagues and other professionals and support the learning and development of others



Understand systematic synthetic phonics in the teaching of reading, and a range of strategies for developing early literacy and mathematics



Learn the current early education curriculum requirements such as the Early Years Foundation Stage (EYFS)



Ability to carry out and record observational assessment accurately



Confidence to identify and act upon responsibilities regarding health and safety, security, confidentiality, safeguarding and promoting the welfare of children

Suitable for:

- Job roles such as such as nursery nurse and childminders
- Highly trained professionals who play a key role in ensuring young children learn and develop well and are kept healthy and safe

Programme delivery

Programme length

15 months (on average) plus End-point Assessment (EPA).

Delivery method

Programme delivered through Lifetime's blended learning approach

Blended learning

Facilitated learning: Learners complete learning sessions with their Learning Coach every 4-6 weeks.

Self-study: Learners are expected to carry out self-study using Lifetime's online learning platform.

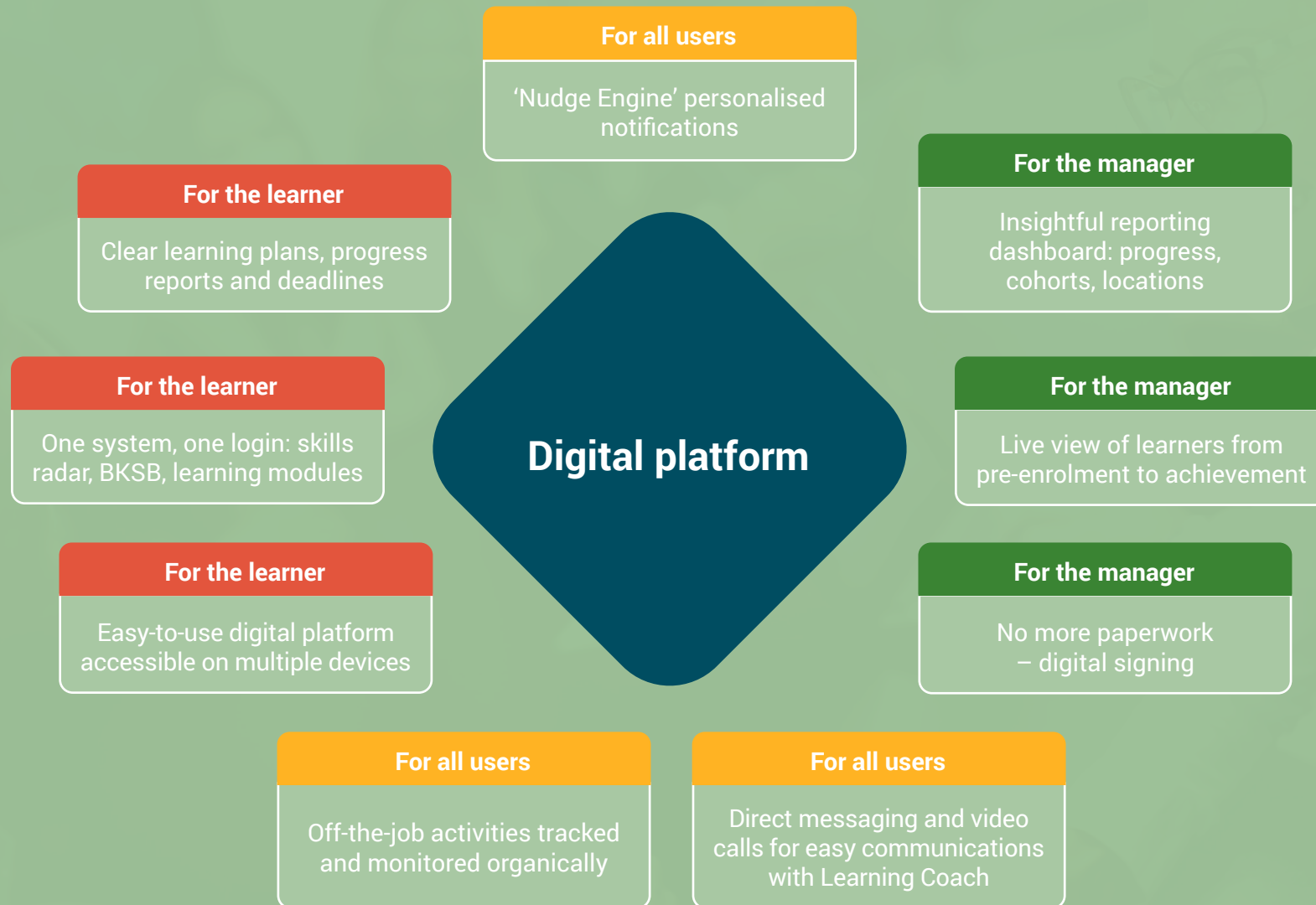
Virtual sessions: Carried out between the Learners and their Lifetime Coach.

Contact: Learners have access to their Learning Coach via email, phone and online learning platform.

Practice assessments: Learners will complete practice and mock assessments at agreed milestones across the programme.



Blended delivery through Lifetime's online learning platform



Programme modules

The delivery model is broken down in the following 9 topics:

1. The Role of the Early Years Educator

2. Child Development

3. Health and Safety in Early Years

4. The Early Years Foundation Framework

5. Safeguarding in Early Years

6. Equality, Diversity and Inclusion

7. Children's Behaviour, Welfare and Care

8. Theories and Philosophical Approaches in Early Years

9. Teaching and Learning in Early Years



Programme module breakdown



The Role of the Early Years Educator

- My role as an Early Years Educator
- Responsibilities of a Early Years Educator
- Being team focused
- Reflecting on your own practice
- Professional development



Child Development

- Children's development
- Factors that influence development
- Transitions
- Positive attachments
- Early intervention special needs



The Early Years Foundation Framework

- The Early Years Foundation Stage Framework
- Observation, assessment and planning
- Child studies



Health and Safety in Early Years

- Legal requirements and guidance for Health and Safety
- Risk assessment
- Respond to accident and emergencies
- Infection control
- Childhood illnesses



Safeguarding in Early Years

- Legal requirements and guidance
- Responsibilities in relations to safeguarding
- Indicators of potential or actual abuse or harm
- Respond to allegations that a child has been abused or harmed
- Online abuse



Equality, Diversity and Inclusion

- Legislation and codes of practice
- Support equality and anti-discrimination
- Promoting equality diversity and inclusion
- British values

Programme module breakdown



Teaching and Learning in Early Years

- Holistic development
- Teaching in the Early Years
- Developing early literacy and mathematics
- Support speech, language and communication



Children's Behaviour, Welfare and Care

- Physical care routines
- Support children's health and wellbeing
- Promote healthy lifestyles
- Positive behaviour
- Supporting positive behaviour



Theories and Philosophical Approaches in Early Years

- Theories
- Philosophical approaches
- Theories of play



Working in Partnership with Parents and others in the Early Years

- Partnership working
- Work in partnership with colleagues and others
- Work in partnership with parents and/or carers
- Childhood illnesses

Learn, share and apply

– example resources

Interactive activities



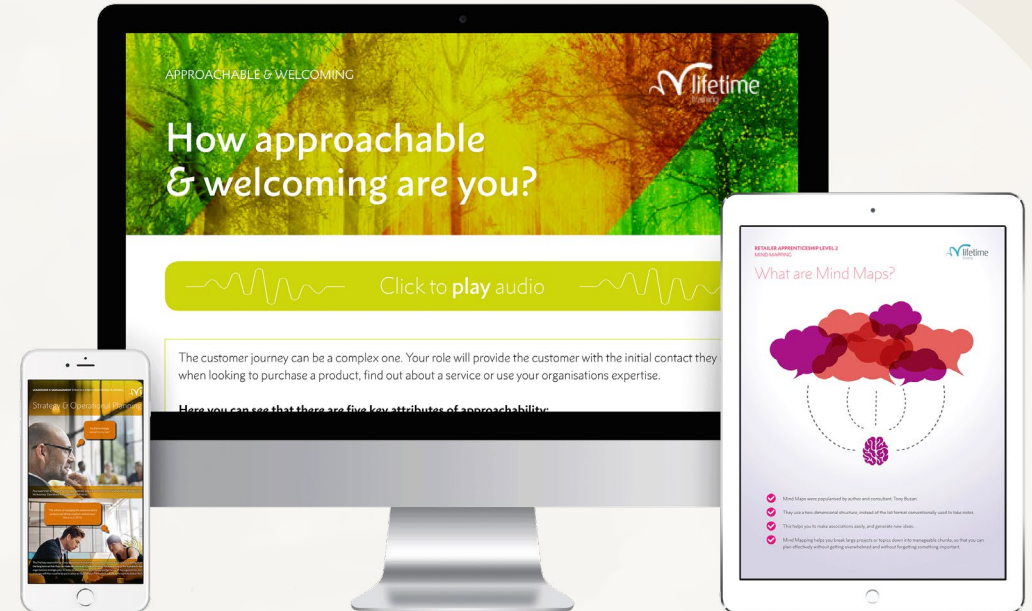
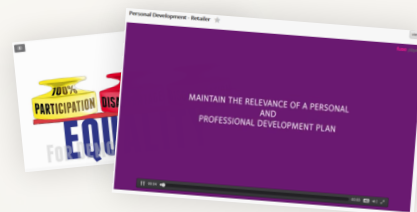
Audio



Interactive worksheets



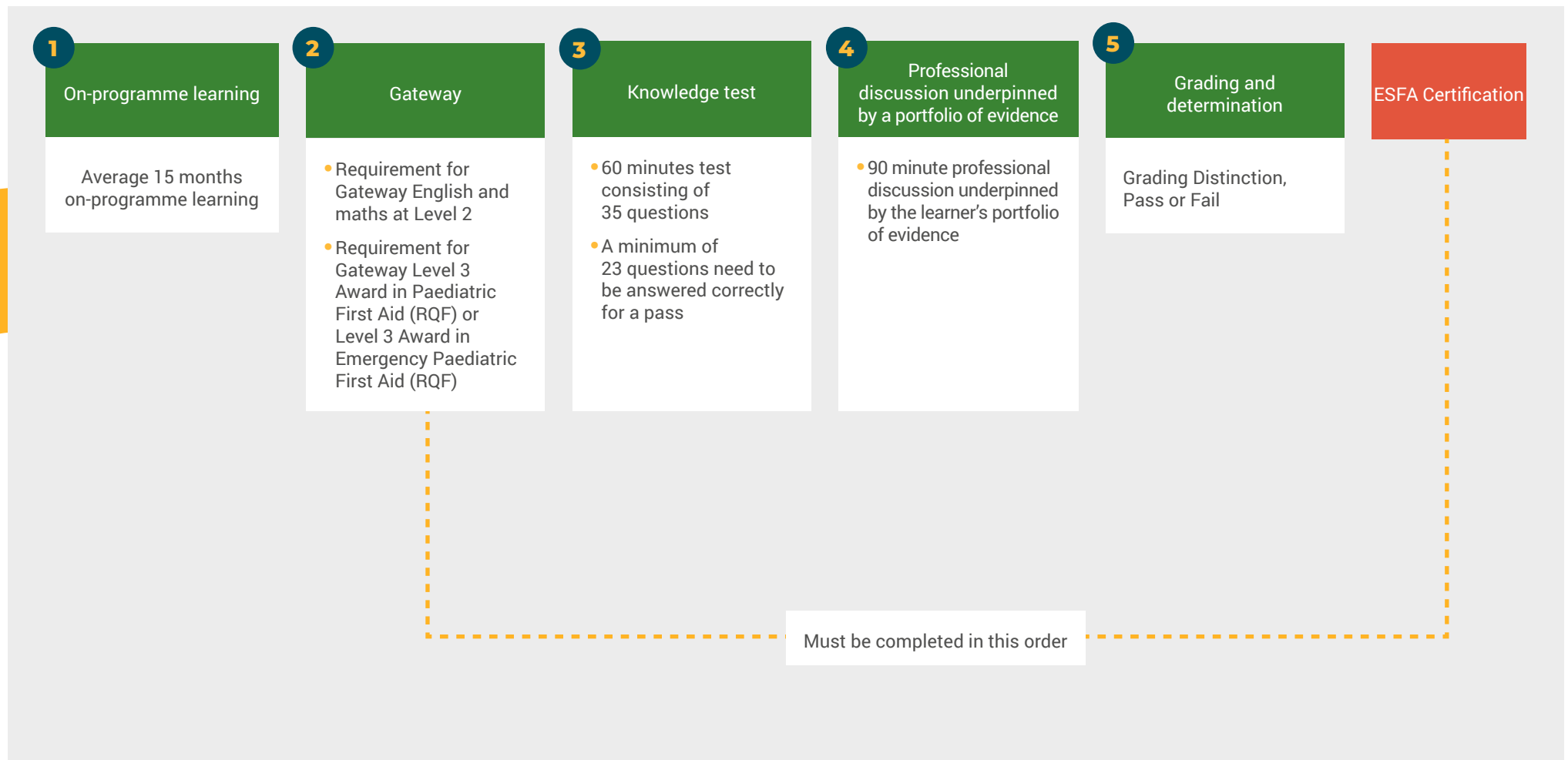
Video



End-point Assessment (EPA)




End-point Assessment journey





**Thanks for
your time.**

 hello@lifetimetraining.co.uk

 www.lifetimetraining.co.uk/contact-us

